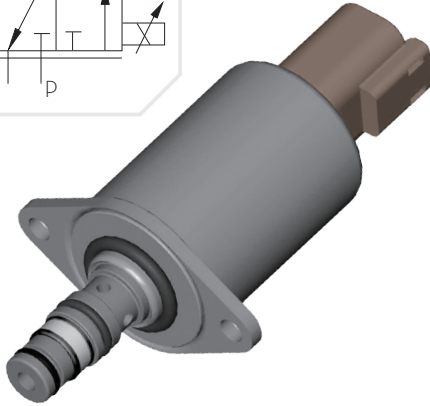
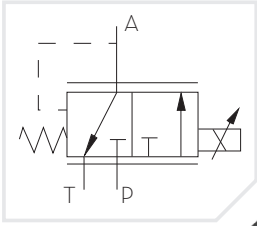


Proportional Pressure Reducing Valve PPCD04-NGPPRV

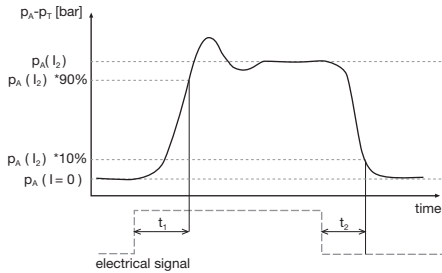


Model Code

PPCD 04	-001	-a	-a	-20	-12	-J	-H	-0
Valve Style	Control Pressure Range: 20 bar; 25 bar; 32 bar	Solenoid Type	Special Version Upon Request	Voltage: 12V; 24V		Termination: D Deutsch DT04-2P; J AMP Jr Power Timer; L Lead Wires		Seal Material: N NBR; H HNBR; F FKM
Manual Override: 0 without; M with (only w/ connector type J)								

Step Response

(50°C Oil Temperature) $t_r, t_z < 50$ ms



Features

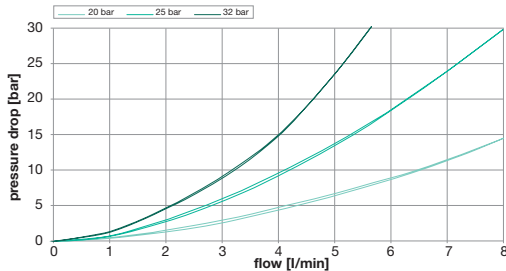
Features	Benefits
Integrated Relief Function	Protection Against Pressure Spikes
Compact Dimensions	Reduced Packaging Dimensions
Low Leakage	Lower Energy Losses
Precise Current vs Pressure Control	Excellent Controllability
Teflon Coated Bronze Bearings	Small Hysteresis, Improved Resolution
Excellent Repeatability	No Calibration Over The Lifetime of The Machine
Highest Quality Standards	No Maintenance, No Downtime
Small Valve to Valve Variance	Easy Replacement, No Service Calibration

Hydraulic Data

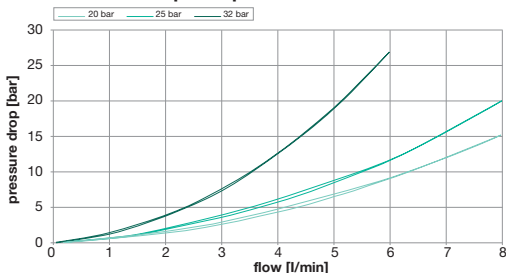
Max Pressure (P, T)	pP = 50 bar, pT = 30 bar
Hysteresis (w/ PWM)	< 0.7 bar (pA=20) < 1.0 bar (pA=25) < 1.5 bar (pA=35)
Filter Screen	125 μ m
Contamination Level	Min Filtration: 20/18/15 According to ISO 4406
Fluid	Mineral Oil According to DIN 51524
Temperature Range Fluid	-40 to +105°C
Valve Specifications According to Thomas LHP-39	

Flow Characteristics

Pressure Drop Control Port to Tank



Pressure Drop Pump to Control Port



Electrical Data

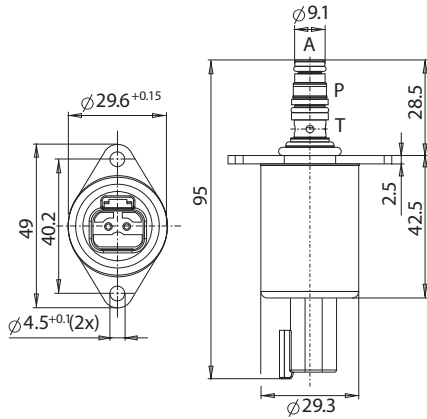
Voltage	12V	24V
Current	1500 mA	750 mA
Resistance	4.72 $\Omega \pm 5\%$	20.8 $\Omega \pm 5\%$
Type of Control	Current Control PWM 100 Hz Recommended	
Connector	AMP Junior Timer Deutsch Connector DT04-2P Flying Leads	
Protection Class	Up to IP6K6 / IPX9K	

Proportional Pressure Reducing Valve PPCD04-NGPPRV

Current vs. Pressure
Less than 2% Hysterisis

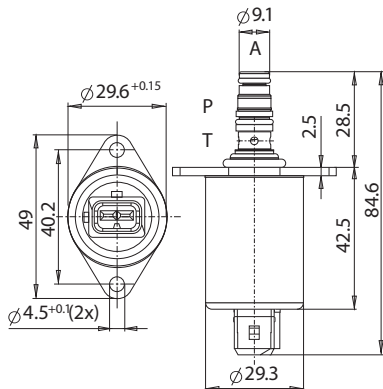
Dimensions with Deutsch Connector

(All dimensions are in mm)



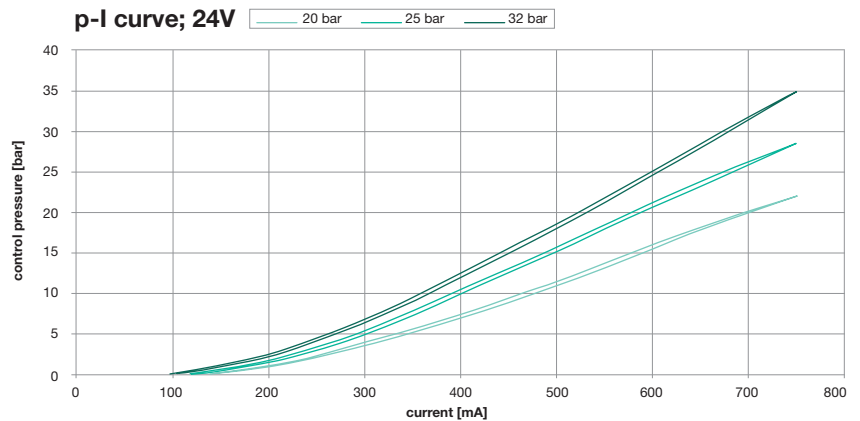
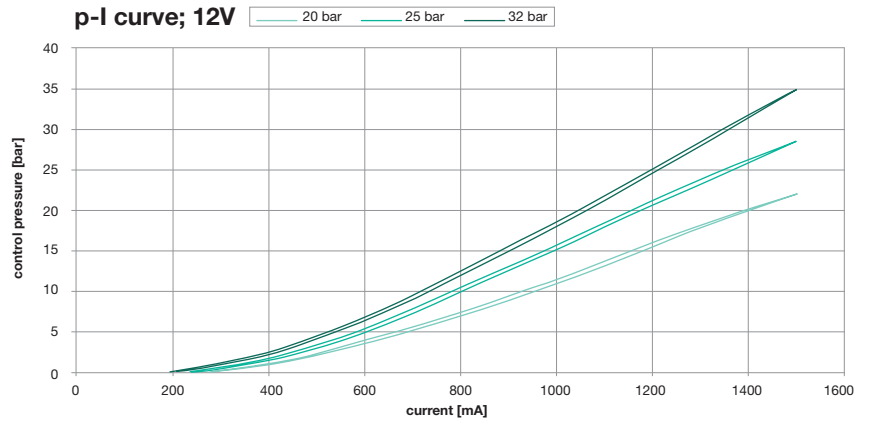
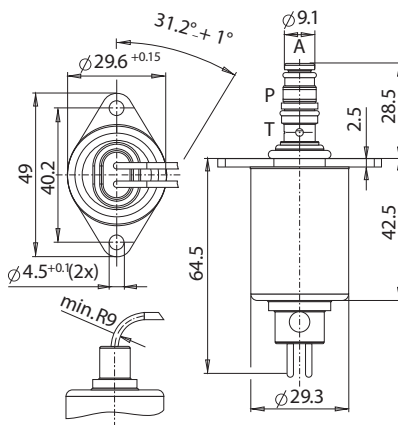
Dimensions with AMP Jr. Connector

(All dimensions are in mm)



Dimensions with Flying Leads

(All dimensions are in mm)



Cavity Dimensions

(All dimensions are in mm)

Cavity According Specification: TC06025
Cavity Tool Part #: 448152-NG

