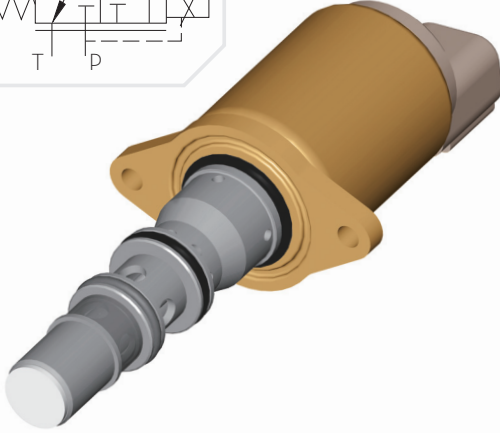
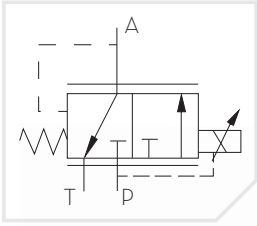


High Flow Proportional Pressure Reducing Valve PPCP09-HFPPRV

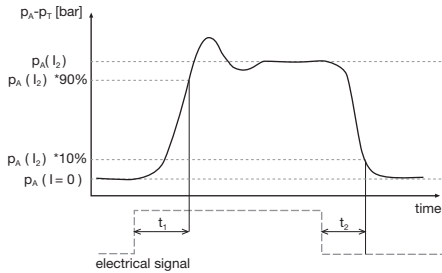


Model Code

| | | | | | | | | |
|-------------|---------------------------------|---------------|-------------|---|-------------------|-----------------------------------|---|----------------------------|
| PPCP 09 | -001 | -b | -g | -30 | -12 | -J | -H | -0 |
| Valve Style | Special Version Upon Request | Solenoid Type | Cavity Type | Control Pressure Range: 30 bar; or 95% of pP | Voltage: 12V; 24V | Termination: J AMP Jr Power-Timer | Seal Material: D Deutch DT04-2P; H HNBR; F FKM | Manual Override: 0 without |

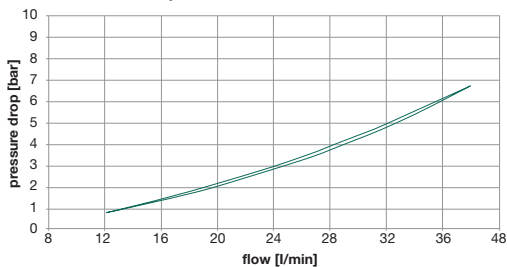
Step Response

(50°C Oil Temperature) $t_1, t_2 < 100$ ms

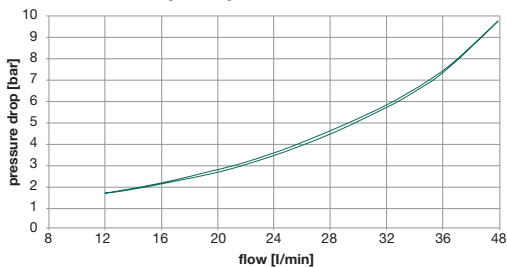


Flow Characteristics

Pressure Drop Control Port to Tank



Pressure Drop Pump to Control Port



Features

| Features | Benefits |
|-------------------------------------|---|
| Integrated Relief Function | Protection Against Pressure Spikes |
| Compact Dimensions | Reduced Packaging Dimensions |
| Low Leakage | Lower Energy Losses |
| Precise Current vs Pressure Control | Excellent Controllability |
| Teflon Coated Bronze Bearings | Small Hysteresis, Improved Resolution |
| Excellent Repeatability | No Calibration Over The Lifetime of The Machine |
| Highest Quality Standards | No Maintenance, No Downtime |
| Small Valve to Valve Variance | Easy Replacement, No Service Calibration |

Hydraulic Data

| | |
|---|---|
| Max Pressure (P, T) | pP = 35 bar, pT = 10 bar |
| Hysteresis (w/ PWM) | < 1.5 bar |
| Filter Screen | 125 µm |
| Contamination Level | Min Filtration: 18/15/13 According to ISO 4406 |
| Fluid | Mineral Oil According to DIN 51524 |
| Temperature Range Fluid | -40 to +105°C |
| Valve Specifications According to Thomas LHP-79 | |

Electrical Data

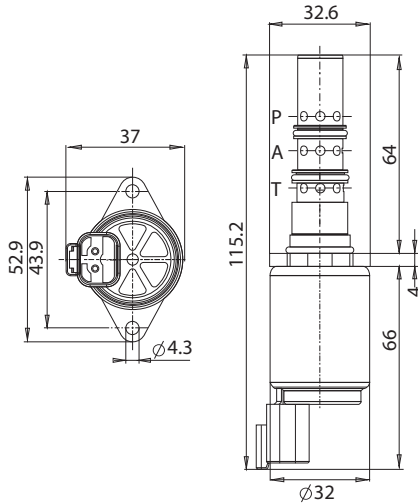
| | | |
|------------------|---|-----------|
| Voltage | 12V | 24V |
| Current | 1000 mA | 500 mA |
| Resistance | 7.7 Ω ± 5% | 31 Ω ± 5% |
| Type of Control | Current Control PWM 600 Hz Recommended | |
| Connector | AMP Junior Timer Deutsch Connector DT04-2P | |
| Protection Class | Up to IP6K6 / IPX9K | |

High Flow Proportional Pressure Reducing Valve PPCP09-HFPPRV

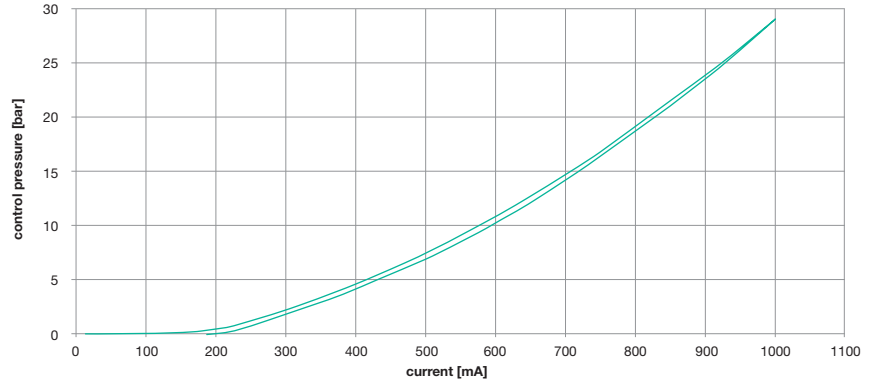
Current vs. Pressure
Less than 2% Hysterisis

Dimensions with Deutsch Connector

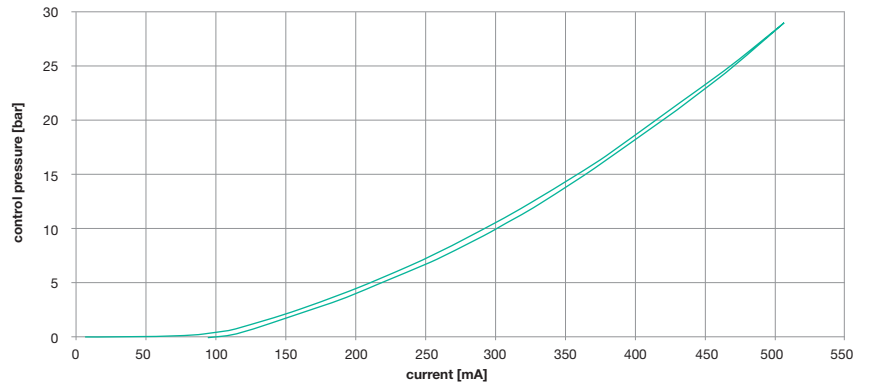
(All dimensions are in mm)



p-I curve; Supply Pressure 32 bar ; 12V



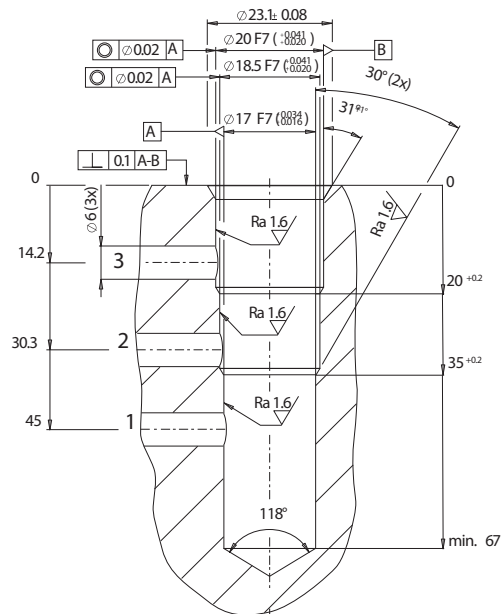
p-I curve; Supply Pressure 32 bar ; 24V



Cavity Dimensions

(All dimensions are in mm)

Cavity According Specification: TC09013
Cavity Tool Part # : 448152-HF



Thomas Magnete GmbH

San Fernando 35
57562 Herdorf
Deutschland

Tel. +49 (0) 2744 929 0
Fax +49 (0) 2744 929 290

www.thomas-magnete.com
info@thomas-magnete.com