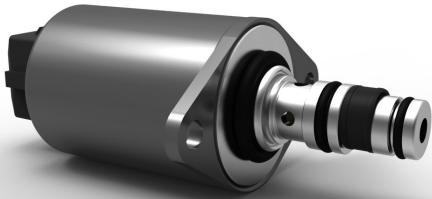
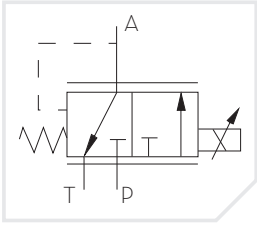


Proportional Pressure Reducing Valve PPCD04-NGPPRV



Model Code

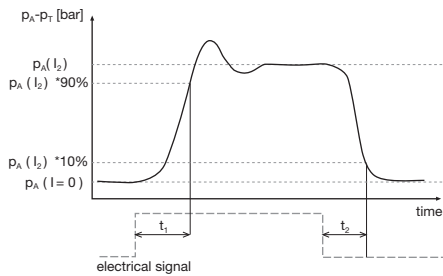
PPCD 04	-001	-a	-a	-20	-12	-J	-H	-0
Valve Style	Special Version up on request	Solenoid Type	Cavity Type	Control Pressure Range: 20 bar; 25 bar; 32 bar	Voltage: 12V; 24V	Connector: J AMP Jr Power-Timer; H NINBR; F FKM	Seal Material: N NBR; D Deutsch DT04-2P; L Lead Wires	Manual Override: 0 without; M with (only with connector type J)

Hydraulic Data

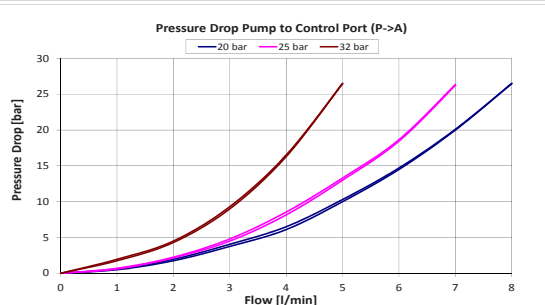
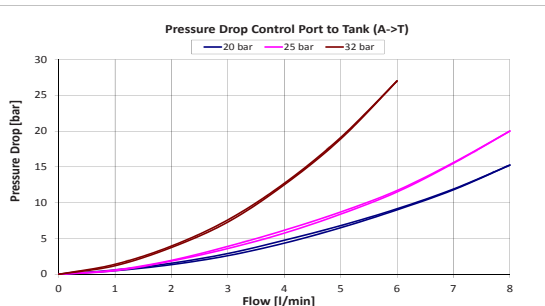
Max Pressure (P, T)	pP = 50 bar, pT = 30 bar
Hysteresis (w/ PWM)	< 0.4 bar (pA=20) < 0.5 bar (pA=25) < 0.7 bar (pA=32)
Filter Screen	125 µm
Contamination Level	Min Filtration: 20/18/15 According to ISO 4406
Fluid	Mineral Oil According to DIN 51524
Temperature Range Fluid	-40 to +105°C
Valve Specifications According to Thomas LHP-39	

Step Response

(50°C Oil Temperature) $t_1, t_2 < 50$ ms



Flow Characteristics



Electrical Data

Voltage	12V	24V
Resolution	1500 mA	750 mA
Resistance	4.72 Ω ± 5%	20.8 Ω ± 5%
Current Consumption (idle)	24 mA (12V) 20 mA (24V)	
Type of Control	Current Control PWM 100 Hz Recommended	
Connector	AMP Junior Timer Deutsch Connector DT04-2P Lead wires	
Protection class	up to IP6K6 / IPX9K	
Conductor	Tinned copper strand UL 758 and CSA C 2.22 Material: CU-ETP1 acc. to DIN EN 13602:2002	
Insulation	Insulation: Soft-PVC, unleaded UL 1581-Tab. 50.182, Shore -hardness A	
Cable Length	500 mm	



The presented information is based on current knowledge and provides only non-binding information to the customer. Any liability in connection with this information is excluded. It is the responsibility of the customer to determine the suitability and appropriateness of the product for his intended purpose. We reserve the right to change the product with regard to technical progress and new developments.