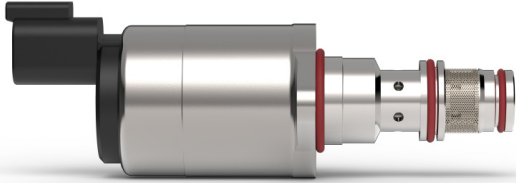
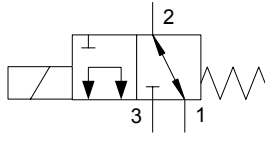
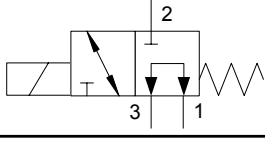
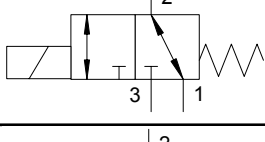
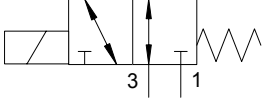


## Directional Valve - DCSD 06 On/Off Valve



### Model Code

|             |                                  |               |             |                   |  |                  |  |            |  |  |
|-------------|----------------------------------|---------------|-------------|-------------------|--|------------------|--|------------|--|--|
| DCSD 06     | -003                             | -g            | -o          | -24               | -D   | -N               | -0   | -m         |  |  |
| Valve Style | Special Version<br>up on request | Solenoid Type | Cavity Type | Voltage: 12V; 24V | Connector<br>J.: AMP Junior Timer<br>N.: NBR; H.: HNBR; F.:FKM | Sealing Material | Manual Override:<br>(only with connector type J) | Spool Type |  |  |

| Symbol | Spool Type  |
|--------|---|
| j      |  |
| k      |  |
| l      |  |
| m      |  |

### Hydraulic Data

|                         |   |
|-------------------------|---|
| Max Pressure            | p2 = 90 bar, p3 = 90 bar, p1 = 50 bar             |
| Pressure Drop 2 -> 1    | < 5 bar at 16 l/min                               |
| Pressure Drop 1 -> 3    | < 5 bar at 16 l/min                               |
| Contamination Level     | Min Filtration: 20/18/15<br>According to ISO 4406 |
| Fluid                   | Mineral Oil According to DIN 51524                |
| Temperature Range Fluid | -30 to + 105°C                                    |
| Leakage                 | < 100 ml/min at 90 bar<br>< 60 ml /min at 50 bar  |
| Valve specification     | according to Thomas LHP 80                        |

### Electrical Data

|                     |   |             |
|---------------------|---|-------------|
| Voltage             | 12V   | 24V         |
| Power Voltage Range | 9V - 16V                                      | 18V - 32V   |
| Connector           | 5,3 Ω ± 5%                                    | 21,2 Ω ± 5% |
| Connector           | AMP Junior Timer<br>Deutsch Connector DT04-2P |             |
| Protection class    | up to IP6K6 / IPX7 / IPX9K                    |             |





The presented information is based on current knowledge and provides only non-binding information to the customer. Any liability in connection with this information is excluded. It is the responsibility of the customer to determine the suitability and appropriateness of the product for his intended purpose. We reserve the right to change the product with regard to technical progress and new developments.