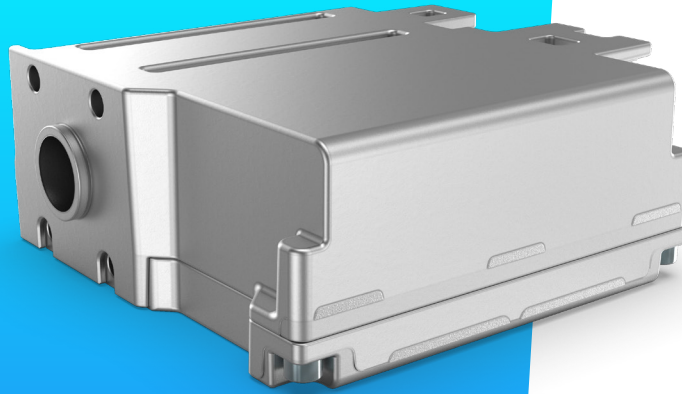


# Electromechanical Actuator [EMA]



Proportional valves

Directional valves

**Smart products**

Special designs

## Product classification

Name	Max volume flow @ 6 bar dp
EHA	2,5–5 l/min based on PPCD 04 IPH
	2,5–5 l/min based on PPCD 04
	10 l/min based on PPCD 05
EMA	



## Electrical Data

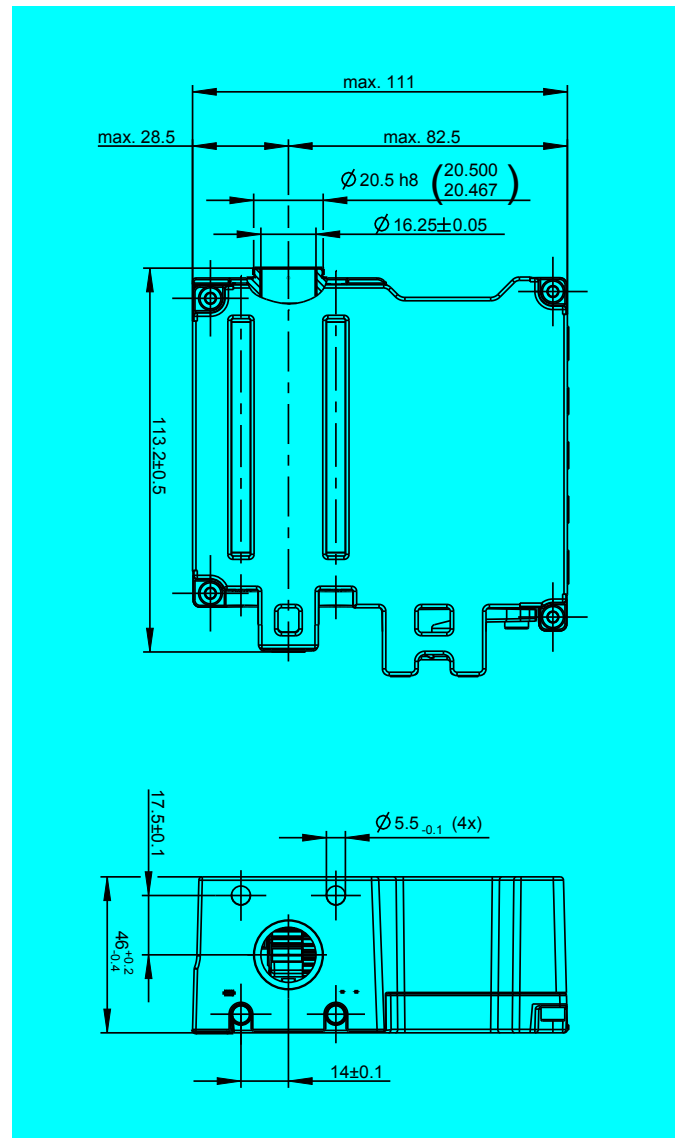
<b>Voltage</b>	12 V	24 V
<b>Operating voltage</b>	Umin = 9 V Umax = 16,5 V	Umin = 16 V Umax = 32 V
<b>Idle current (without holding current)</b>	80 mA	60 mA
<b>Holding current</b>		
Extend / Retract	~ 830 mA	500 mA
Neutral	~ 540 mA	300 mA

## Performance Data

<b>Temperature range for normal operation</b>	-40 °C to +100 °C (ambient temp. with circulating air. EMA mounted to a sectional valve)
<b>Temperature range for reduced operation</b>	+100 °C to +120 °C (ambient temp. with circulating air. EMA mounted to a sectional valve)
<b>Working stroke</b>	22 mm
<b>Speed (in normal mode)</b>	80 mm/s
<b>Minimum actuating force provided by the actuator (at a Voltage &gt; 10.8)</b>	240 N @ 80 mm/s 280 N @ 60 mm/s 340 N @ 10 mm/s
<b>Holding force</b>	250 N
<b>Repeatability (at constant temperature conditions)</b>	± 6 µm
<b>Resolution</b>	6 µm

## Actuator and interface

(All dimensions in mm)







## CONTACT DETAILS




### Michael Lutz

**Thomas Magnete GmbH**

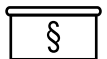
 Innomotion Park 3  
57562 Herdorf, Germany

 Tel. +49 2744 929-220

 michael.lutz@thomas-magnete.com  
www.thomas-group.com



## DISCLAIMER



The presented information is based on current knowledge and provides only non-binding information to the customer. Any liability in connection with this information is excluded. It is the responsibility of the customer to determine the suitability and appropriateness of the product for his intended purpose. We reserve the right to change the product with regard to technical progress and new developments.